

4-27-2016

Table of Contents and Advertisements

Furman University

Follow this and additional works at: <http://scholarexchange.furman.edu/furman-magazine>

Recommended Citation

University, Furman (2016) "Table of Contents and Advertisements," *Furman Magazine*: Vol. 59: Iss. 1, Article 3.
Available at: <http://scholarexchange.furman.edu/furman-magazine/vol59/iss1/3>

This Front Matter is made available online by part of the Furman University Scholar Exchange (FUSE). It has been accepted for inclusion in Furman Magazine by an authorized FUSE administrator. For terms of use, please refer to the [FUSE Institutional Repository Guidelines](#). For more information, please contact scholarexchange@furman.edu.

Furman at your fingertips.

Connect. Network.
Get the latest.



Get the **Furman App** Now!

Connect with fellow alumni, parents, and friends

Network with Paladins in your career field and area with the Class Ring feature

Get the latest Furman news, personalized just for you

Stay in touch with everything Furman

Go to the app store and search for "The Furman App" to download.



pg. **28**

Getting to the root of why food deserts exist in America

OVERHEARD

Your letters, your comments, and Quotables. **pg. 4**

LETTER FROM THE PRESIDENT

Elizabeth Davis on the results of a yearlong study of Furman. **pg. 6**

AROUND THE LAKE

A book on the legal history between Furman and Greenville, a new data lab at Furman, and the digital altruism of **Karolle Rabarison '10**. Plus, our **On the Quad** fashion strip, the numbers behind Furman's internships in **FUmerical**, three images from a Study Away in **TRIPTYch**, and a Cherrydale legend in **From the Vault**. **pg. 7**

THEN, NOW, NEXT

Reflections on what was important, is, and will be at Furman. **pgs. 11-15**

DISPATCH

The promising, and problematic, research in genetics—with professor Renee Chosed. **pg. 12**

Q&A

Minister and advocate for racial justice **Kimberly Jackson '06**. **pg. 16**

Features

SOME EARTHLY IDEA

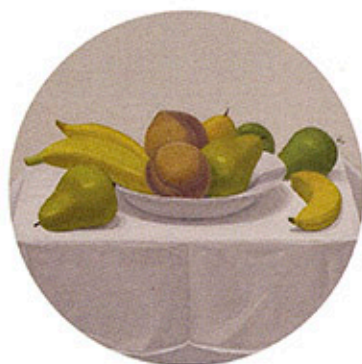
By Ken Kolb

A sociology professor takes his research to the field—the literal field—to find out what we're overlooking when it comes to our relationship to food, hunger, and equality. **pg. 28**

F-STOP

By Jeremy Fleming '09

It has many names—the magic hour, the golden hour, *l'heure bleue*, the gloaming—but the hour when the sun lowers and the day is on the verge of night is a photographer's canvas. We asked ours to chronicle Furman, a transformational place, at this liminal moment. **pg. 36**



STILL

Poetry by **Anne Marie Powell '16**; artwork by professor Michael Brodeur **pg. 66**

NOTES FROM THE FIELD

Furman's Mock Trial team is no mere courtroom drama. It's an intellectual arena where those who come to play come to win. **pg. 20**

THE COMEBACK

For those with kids, Greenville has many reliable outlets for quality time—as well as some hidden gems. **pg. 46**

SHELF LIFE

What works are inspiring Broadway actor **Seph Stanek '08**. **pg. 50**

PERSPECTIVE

Professor C. Danielle Vinson on our love-hate relationship with the U.S. Congress. **pg. 52**

CLASS NOTES

Quotables from **Michael MacLeod '89** and **Brenda McClain '74**. In **Up Close**: Afghanistan educator **Mary Jae Abbitt Sushka '70** and hospital CEO **Craig McCoy '93**. **After the Aisle** spotlights newlyweds **Jen Betts '11** and **Austin Reeves '11**. Plus, we debut our new section, **Scene and Be Seen**—snapshots of Furman events from across the country. **pg. 54**